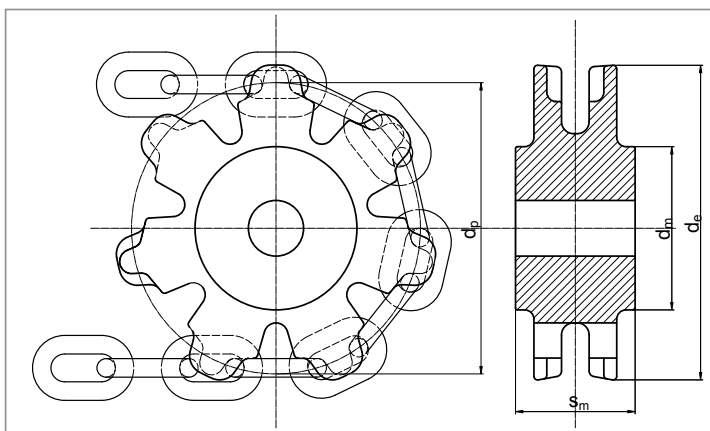
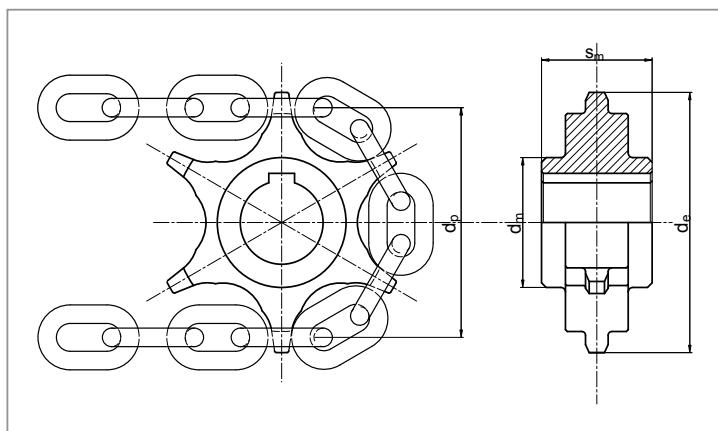
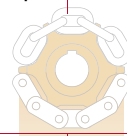


**Ruote dentate e alveolate**
**Toothed and pocket wheels**
**Ruedas dentadas y alveoladas**

**Ruota dentata - toothed wheel - rueda dentada**
**A**
**Ruota alveolata - pocket wheel - rueda alveolata**
**B**

Codice Code Código	Ruota Wheel Rueda		Catena Chain Cadena	 $d_p$ $d_e$ $d_m$ $s_m$ mm	$\emptyset$ Foro max consigliato Max hole suggested Agujero máx sugerido	N° denti No. teeth No. dientes	Massa Mass Masa kg ? <sup>(1)</sup>			
	dentata toothed dentada	alveolata pocket alveolata								
RA10x35 - Z7		x	10x35 DIN 764	157	176	88	55	50	7	5.2
RD10x35 - Z6	x		10x35 DIN 764	136	140	70	60	45	6	2.1
RA13x45 - Z7		x	13x45 DIN 764	203	230	120	70	70	7	11.7
RD14x50 - Z8	x		14x50 LH	256	275	115	130	70	8	10 <sup>(2)</sup>
RA16x56 - Z7		x	16x56 DIN 764	252	280	130	100	80	7	23
RD16x56 - Z6	x		16x56 DIN 764	217	229	130	100	80	6	11.5
RD16x56 - Z8	x		16x56 DIN 764	287	302	170	70	100	8	18
RD16x64 - Z8	x		16x64 LH	328	344	170	80	100	8	22
RA18x63 - Z6		x	18x63 DIN 764	244	274	168	100	95	6	24
RA18x63 - Z7		x	18x63 DIN 764	284	322	147	90	95	7	27
RA20x70 - Z8		x	20x70 DIN 764	359	400	180	115	140	8	72
RA23x80 - Z8		x	23x80 DIN 764	411	450	200	135	140	8	85
RA22x86 - Z6		x	22x86 LH	333	400	160	130	135	6	89
RD22x86 - Z10	x		22x86 LH	550	585	230	160	-	10	24 <sup>(2)</sup>

(1) per ruota con foro grezzo - for wheel with unmachined bore - para ruedas con agujero sin mecanizar

(2) Settore dentato - toothed segment - segmento dentado